



# IIT MADRAS

Indian Institute of Technology Madras

## Technology Transfer Office TTO - IPM Cell



### Industrial Consultancy & Sponsored Research (IC&SR)

## MACHINE LEARNING, DEEP LEARNING AND ARTIFICIAL INTELLIGENCE FOR PHYSICAL TRANSPORT PHENOMENON IN THERMAL MANAGEMENT

### IITM Technology Available for Licensing

#### Problem Statement

- Artificial Intelligence is model to solve transport, image reconstruction in engineering
- Artificial Intelligence is model to design and predict analysis in engineering thermal management, electronic cooling industries, automobile industries.
- Automobile industries like fluid dynamics design and predictions over a bonnet or inside the engine, aerospace industries like aerodynamics and fluid dynamics problems across an aero-foil or wing.

#### Technology Category/ Market

**Category** – Artificial Intelligence (AI) & Machine Learning

**Applications** – Artificial Intelligence in engineering design and analysis

**Industry** – Automobiles, Steel Factories, Industrial real estate, Industrial buildings, AIFurniture Industry, AIHome Décor, Aeroplane Industry, Food Industry, Clothing Industries, AIEthics, AICinemas, IMAX, GUILD, AIPlay Stations, AICalendar App Industry, Package Factory, App Industry, Economy App Industry, Ad App Industry, Phone Industries, Electronic Industries, Shelf Goods Industry

**Market** – Artificial Intelligence (AI) Engineering Global Market size is predicted to reach \$59.22 billion in 2028 at a compound annual growth rate (CAGR) of 38.8%.

#### TRL (Technology Readiness Level)

TRL- 5, Technology validated in relevant environment.

#### Intellectual Property

IITM IDF Ref. 1933 (Patent Published)

#### Image

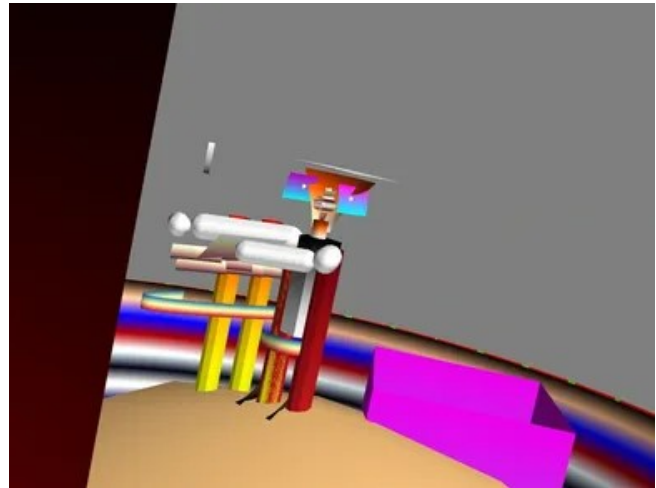


Fig 1 (our Patent and <https://aicartoon.today> GoDaddy copyright Product) Guild IMAX AIAnimation cinema software Technology

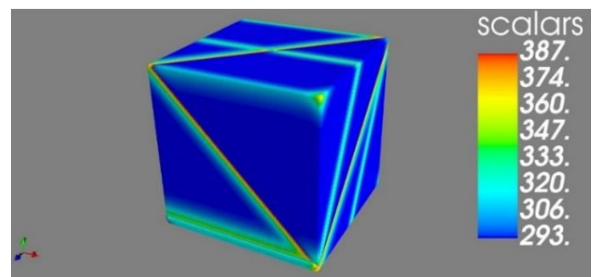


Fig 2 (our Conference Product) AI steel structure tools to predict flame temperature in Kelvin

#### Research Lab

**Professor Vishal V R Nandigana**

Department of Mechanical Engineering

**Ananyananda Dasari**

Student

#### CONTACT US

**Dr. Dara Ajay, Head TTO**

Technology Transfer Office,  
IPM Cell- IC&SR, IIT Madras

**IITM TTO Website:**

<https://ipm.icsr.in/ipm/>

**Email:** [smipm-icsr@icsrpis.iitm.ac.in](mailto:smipm-icsr@icsrpis.iitm.ac.in)

[sm-marketing@imail.iitm.ac.in](mailto:sm-marketing@imail.iitm.ac.in)

**Phone:** +91-44-2257 9756/ 9719

### Technology

Bridge



Fig 3 (our Patent and <https://aicartoon.today> GoDaddy copyright Product) AI T bridge structure design AI tools having advance bit resolution



Fig 4 (our Patent and <https://aicartoon.today> GoDaddy copyright Product) AI Fire AI Play Station



Fig 5 (our Patent and <https://aicartoon.today> GoDaddy copyright Product) AI Stick Shirt

### Value Proposition

- We provide Sustainable AI Design Net Worth Products US\$69421 (Rs 5801028) <https://aicartoon.today> GoDaddy copyright Products
- Our Artificial Intelligence products from AI Design Private Limited GoDaddy copyright Products are environment protect and no harmful by-products <https://aicartoon.today>

### CONTACT US

Dr. Dara Ajay, Head TTO  
Technology Transfer Office,  
IPM Cell- IC&SR, IIT Madras

IITM TTO Website:  
<https://ipm.icsr.in/ipm/>

Email: [smipm-icsr@icsrpis.iitm.ac.in](mailto:smipm-icsr@icsrpis.iitm.ac.in)  
[sm-marketing@imail.iitm.ac.in](mailto:sm-marketing@imail.iitm.ac.in)  
Phone: +91-44-2257 9756/ 9719