



Industrial Consultancy & Sponsored Research (IC&SR)

DATA PACKET PROCESSING AND TRANSMISSION IN A NETWORK

IITM Technology Available for Licensing

PROBLEM STATEMENT

- A software-defined **networking architecture** allows a **computer network** to transmit **data packets** between **multiple computing devices** using various components like a **switching device** and a **controlling device**.
- The **communication** is initiated by a **source device**, which transmits the **data packet** to a **destination device**.
- The objective is to reduce the **number of interactions** used to obtain the **packet forwarding policy** between the controlling device and the plurality of switching devices.

TECHNOLOGY CATEGORY MARKET

Technology: Data packet processing and transmission in a network

Category: Computer Hardware, Software & Algorithm

Industry: Network Industry

Application: Simplification of controller interaction

Market: The global market size was **USD 13.2 billion** in **2022** and is projected to grow to **USD 46.6 billion** by **2027**, with a **CAGR** of **28.7%**.

INTELLECTUAL PROPERTY

IITM IDF Ref. 1942

Patent No: IN 511777

TRL (Technology Readiness Level)

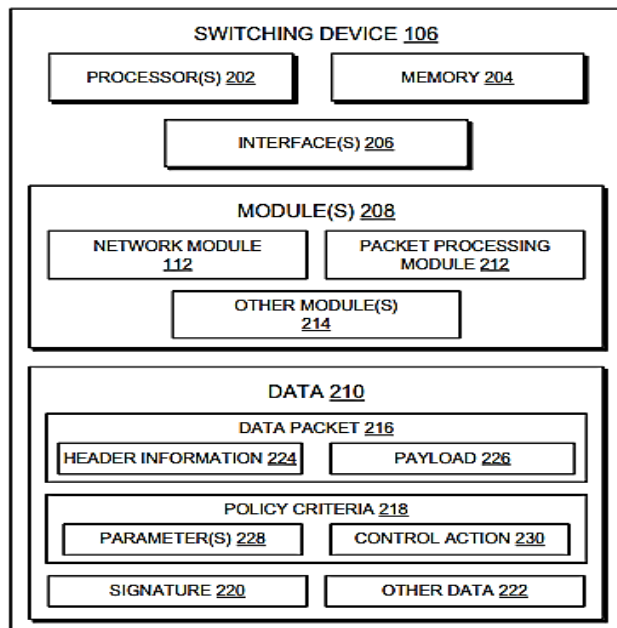
TRL- 2, Technology concept formulated

Research Lab

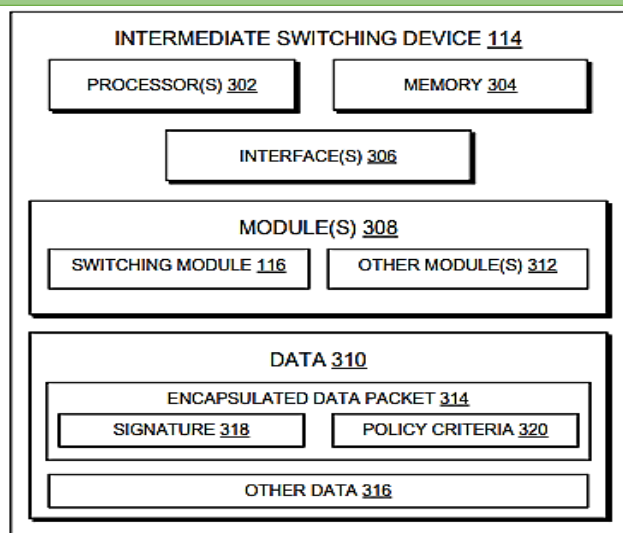
Prof. Krishna M Sivalingam,
Dept. of Computer Science and Engineering

TECHNOLOGY

Block diagram of an example switching device for processing and transmitting a data packet from a source computing device to a subsequent switching device in a network



Block diagram of an example intermediate switching device for processing and transmitting a data packet from a preceding switching device to a subsequent switching device in a network



CONTACT US

Dr. Dara Ajay, Head TTO
Technology Transfer Office,
IPM Cell- IC&SR, IIT Madras

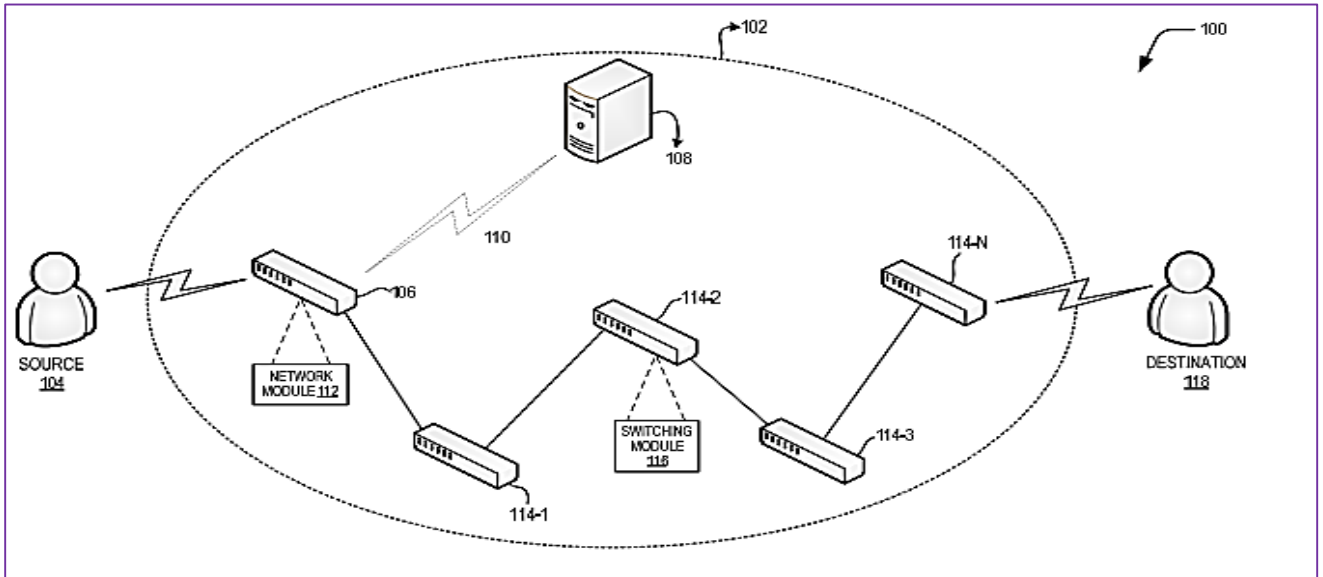
IITM TTO Website:
<https://ipm.icsr.in/ipm/>

Email: headtto-icsr@icsrpis.iitm.ac.in
tto-mktg@icsrpis.iitm.ac.in

Phone: +91-44-2257 9756/ 9719

Industrial Consultancy & Sponsored Research (IC&SR)

An exemplary networking environment for implementing a plurality of switching device(s) and other components in a network



Key Features / Value Proposition

➤ Switching Device Advantages

- Processes and transmits data packets in software-defined networking environment.

➤ Source address:

- MAC address of source computing device.

➤ Destination address:

- MAC address of destination computing device.
- Controlled by SDN controller.

➤ Switching Device Policy

- Receives multiple policy criteria from controlling device.
- Receives header information if no policy criteria present.
- Provides policy criteria based on data packet header information.
- Installs one of the received policy criteria from the controlling device.
- Includes addresses of subsequent network switching devices for data packet flow.

- Encapsulates data packet with a signature of the switching device

➤ Intermediate Switching Device Implementation Method

- Hardware or software-based application.

➤ Method for Receiving Policy Criteria

- Combines multiple policy criteria into flow entries.

➤ Implementing Policy Criteria in Intermediate Switching Device

- Verification of preceding device's signature.
- Implementing plural policy criteria.

➤ Implementing Policy Criteria

- Add or modify flow entries in intermediate switching device flow table.

CONTACT US

Dr. Dara Ajay, Head TTO
Technology Transfer Office,
IPM Cell- IC&SR, IIT Madras

IITM TTO Website:
<https://ipm.icsr.in/ipm/>

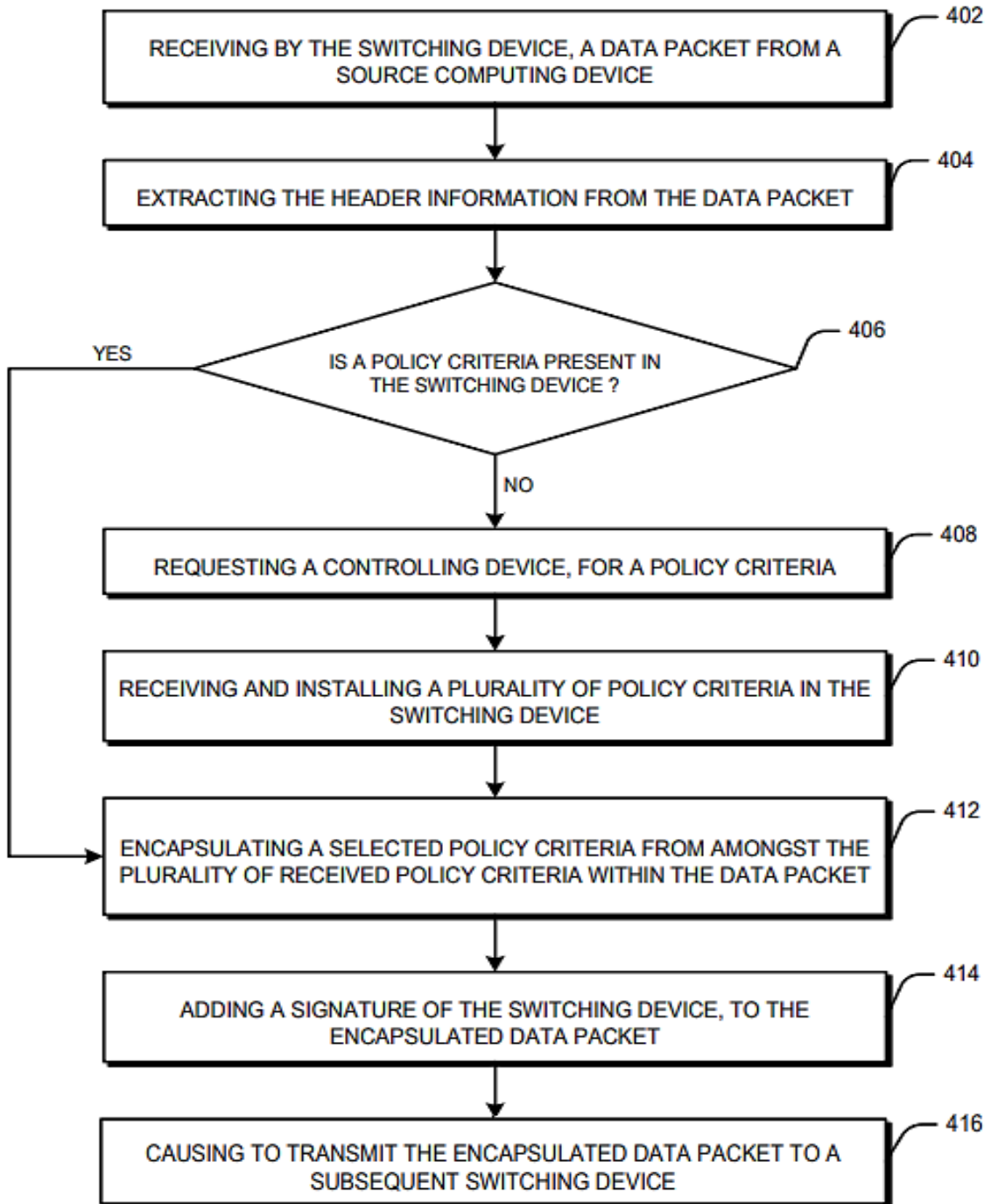
Email: headtto-icsr@icsrpis.iitm.ac.in
tto-mktg@icsrpis.iitm.ac.in

Phone: +91-44-2257 9756/ 9719



Industrial Consultancy & Sponsored Research (IC&SR)

Flowchart depicting an example method for processing and transmitting a data packet from a source computing device to a subsequent switching device in a network



CONTACT US

Dr. Dara Ajay, Head TTO
Technology Transfer Office,
IPM Cell- IC&SR, IIT Madras

IITM TTO Website:
<https://ipm.icsr.in/ipm/>

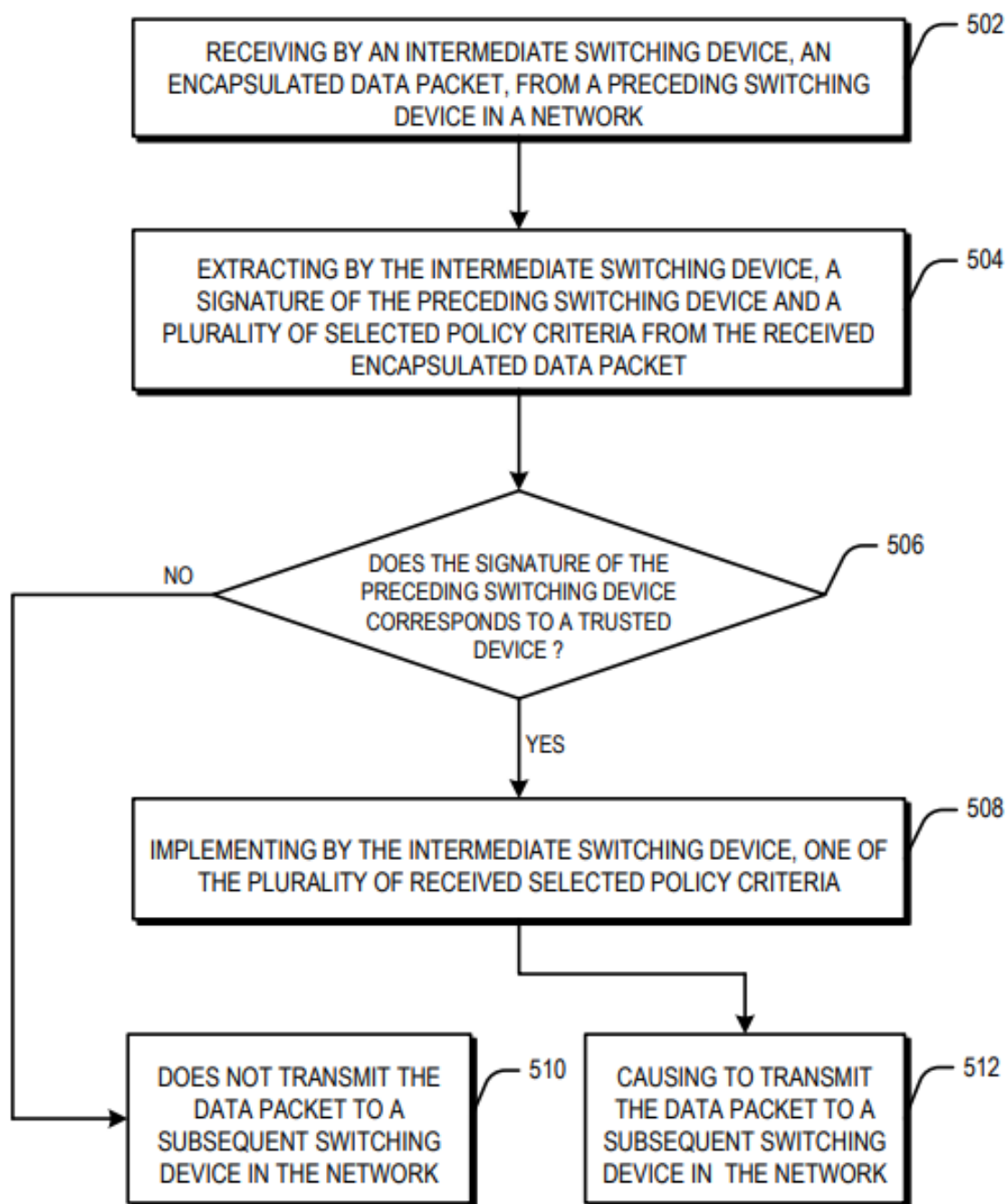
Email: headtto-icsr@icsrpis.iitm.ac.in
tto-mktg@icsrpis.iitm.ac.in

Phone: +91-44-2257 9756/ 9719



Industrial Consultancy & Sponsored Research (IC&SR)

Flowchart depicting an example method for processing and transmitting a data packet from a preceding switching device to a subsequent switching device in a network



CONTACT US

Dr. Dara Ajay, Head TTO
Technology Transfer Office,
IPM Cell- IC&SR, IIT Madras

IITM TTO Website:
<https://ipm.icsr.in/ipm/>

Email: headtto-icsr@icsrpis.iitm.ac.in
tto-mktg@icsrpis.iitm.ac.in

Phone: +91-44-2257 9756/ 9719